



MARMONEGRAIS

mármore e granitos ,lda

GENERAL CATALOG - LIMESTONE | MARBLE

Located in one of the most significant areas of limestone exploitation of the country, where for more than 200 years have been extracting some of the most symbolic limestone varieties in Portugal, as the *Lioz*, the *Amarelo de Negrais* or the *Encarnado da Pedra Furada*, the Marmonegrais company, since 1988, is dedicated to sawing limestone/marble blocks, providing the desired plates in various thicknesses according to customer specifications and intended purpose.

Equipped with various cutting units, is prepared to meet the needs of its clients in various areas, offering a stock of blocks and plates in multiple varieties.

In this catalog we intend to show the most significant varieties we have, properly characterized with technical and scientific information provided by LNEG - National Laboratory of Energy and Geology. Other varieties available on request.

INFORMATIONS | PRICES | STOCKS

www.marmonegrais.pt

Tel. (+351) 219 279 251 | 219 672 454

Fax. (+351) 219 672 261

geral@marmonegrais.pt



marmonegrais
mármore e granitos, lda



VIDRAÇO MOLEANOS CREME

Technical Information

- Compression Breaking Load: 953 kg/cm²
- Compression B.L. after F.T.: 1030 kg/cm²
- Bending Strength: 105 kg/cm²
- Volumetric Weight: 2567 kg/m³
- Water Absorption: 1,73 %
- Apparent Porosity: 4,44 %
- Thermal Linear Expansion Coefficient: 5,00 x 10⁻⁶ per °C
- Abrasion Test: 4,20 mm
- Impact Test: 40 cm



VIDRAÇO MOLEANOS AZUL

Technical Information

- Compression Breaking Load: 1689Kg/cm²
- Compression B.L. after F.T.: 1648 Kg/cm²
- Bending Strength: 209 Kg/cm²
- Volumetric Weight: 2647 Kg/m³
- Water absorption at atmospheric pressure: 0,81 %
- Apparent Porosity: 2,14 %
- Thermal Linear Expansion Coefficient: 3,9x10⁻⁶ per °C
- Abrasion Test: 3,7 mm
- Impact Test: 25 cm



VIDRAÇO ATAÍJA CREME

Technical Information

- Compression Breaking Load: 1327 Kg/cm²
- Compression B.L. after F.T.: 1294 Kg/cm²
- Bending Strength: 129 Kg/cm²
- Volumetric Weight: 2657 Kg/m³
- Water absorption at atmospheric pressure: 0,62 %
- Apparent Porosity: 1,65 %
- Thermal Linear Expansion Coefficient: 3,6x10⁻⁶ per °C
- Abrasion Test: 3,4 mm
- Impact Test: 30 cm



VIDRAÇO ATAÍJA AZUL

Technical Information

- Compression Breaking Load: 1653 Kg/cm²
- Compression B.L. after F.T.: 1568 Kg/cm²
- Bending Strength: 135 Kg/cm²
- Volumetric Weight: 2676 Kg/m³
- Water absorption at atmospheric pressure: 0,35 %
- Apparent Porosity: 0,93 %
- Thermal Linear Expansion Coefficient: 3,9x10⁻⁶ per °C
- Abrasion Test: 3,4 mm
- Impact Test: 35 cm



marmonegrais
mármore e granitos, lda



MOCA CREME RELVINHA

Technical Information

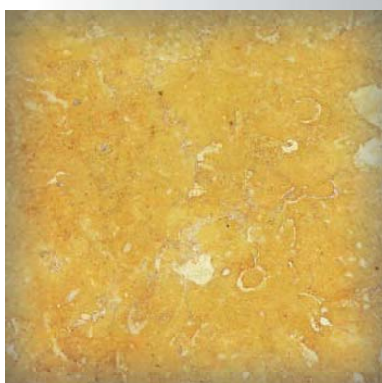
- Compression Breaking Load: 760 kg/cm²
- Compression B.L. after F.T.: 796 kg/cm²
- Bending Strength: 176 kg/cm²
- Volumetric Weight: 2433 kg/m³
- Water absorption at atmospheric pressure: 3,60 %
- Apparent Porosity: 8,92 %
- Thermal Linear Expansion Coefficient: 3,40 x 10⁻⁶ per °C
- Abrasion Test: 4,20 mm
- Impact Test: 30-35 cm



MOCA CREME MÉDIO

Technical Information

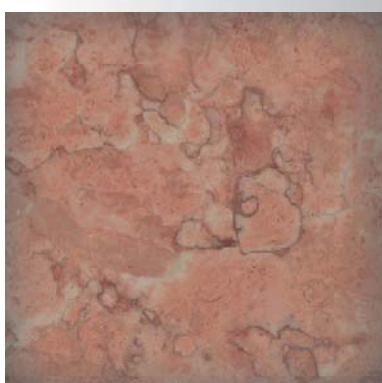
- Compression Breaking Load: 927 kg/cm²
- Compression B.L. after F.T.: 867 kg/cm²
- Bending Strength: 196 kg/cm²
- Volumetric Weight: 2515 kg/m³
- Water absorption at atmospheric pressure: 2,34 %
- Apparent Porosity: 5,90 %
- Thermal Linear Expansion Coefficient: 5,30 x 10⁻⁶ per °C
- Abrasion Test: 4,00 mm
- Impact Test: 40 cm



AMARELO NEGRAIS

Technical Information

- Compression Breaking Load: 1442Kg/cm²
- Compression B.L. after F.T.: 1120 Kg/cm²
- Bending Strength: 203 Kg/cm²
- Volumetric Weight: 2674 Kg/m³
- Water absorption at atmospheric pressure: 0,44 %
- Apparent Porosity: 1,18 %
- Thermal Linear Expansion Coefficient: 4,4x10⁻⁶ per °C
- Abrasion Test: 2,8 mm
- Impact Test: 50-55 cm



ENCARNADO PEDRA FURADA

Technical Information

- Compression Breaking Load: 1427 kg/cm²
- Compression B.L. after F.T.: 1145 kg/cm²
- Bending Strength: 124 kg/cm²
- Volumetric Weight: 2697 kg/m³
- Water absorption at atmospheric pressure: 0,15 %
- Apparent Porosity: 0,41 %
- Thermal Linear Expansion Coefficient: 4,30 x 10⁻⁶ per °C
- Abrasion Test: 2,00 mm
- Impact Test: 55 cm



marmonegrais
mármore e granitos, lda



SEMI RIJO

Technical Information

- Compression Breaking Load: 550 kg/cm²
- Compression B.L. after F.T.: 555 kg/cm²
- Bending Strength: 108 kg/cm²
- Volumetric Weight: 2346 kg/m³
- Water absorption at atmospheric pressure: 5,12 %
- Apparent Porosity: 12,03 %
- Thermal Linear Expansion Coefficient: $5,70 \times 10^{-6}$ per °C
- Abrasion Test: 5,90 mm
- Impact Test: 35 cm



SEMI RIJO ROSAL

Technical Information

- Compression Breaking Load: 493Kg/cm²
- Compression B.L. after F.T.: 457 Kg/cm²
- Bending Strength: 123 Kg/cm²
- Volumetric Weight: 2305 Kg/m³
- Water absorption at atmospheric pressure: 5,47 %
- Apparent Porosity: 12,61 %
- Thermal Linear Expansion Coefficient: $3,3 \times 10^{-6}$ per °C
- Abrasion Test: 9,3 mm
- Impact Test: 25 cm



SEMI RIJO BRANCO DO MAR

Technical Information

- Compression Breaking Load: 658 Kg/cm²
- Compression B.L. after F.T.: 704 Kg/cm²
- Bending Strength: 320 Kg/cm²
- Volumetric Weight: 2368 Kg/m³
- Water absorption at atmospheric pressure: 4,8%
- Apparent Porosity: 11,37 %
- Thermal Linear Expansion Coefficient: $3,8 \times 10^{-6}$ per °C
- Abrasion Test: 6,9mm
- Impact Test: 30 cm



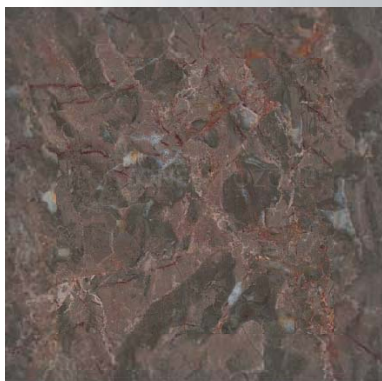
AZUL LOURINHÃ

Technical Information

- Not available



marmonegrais
mármore e granitos, lda



BRECHA TAVIRA

Technical Information

- Compression Breaking Load: 1166 kg/cm²
- Compression B.L. after F.T.: 1225 kg/cm²
- Bending Strength: 191 kg/cm²
- Volumetric Weight: 2704 kg/m³
- Water absorption at atmospheric pressure: 0,24 %
- Apparent Porosity: 0,65 %
- Thermal Linear Expansion Coefficient: $5,90 \times 10^{-6}$ per °C
- Abrasion Test: 2,20 mm
- Impact Test: 35 cm



BRECHA SANTO ANTÓNIO

Technical Information

- Compression Breaking Load: 1358 Kg/cm²
- Compression B.L. after F.T.: 1212 Kg/cm²
- Bending Strength: 163 Kg/cm²
- Volumetric Weight: 2358 Kg/m³
- Water absorption at atmospheric pressure: 2 %
- Apparent Porosity: 4,7 %
- Thermal Linear Expansion Coefficient: $7,1 \times 10^{-6}$ per °C
- Abrasion Test: 1,8 mm
- Impact Test: 45-50 cm



LIOZ CLARO

Technical Information

- Compression Breaking Load: 1050 kg/cm²
- Compression B.L. after F.T.: 1380 kg/cm²
- Bending Strength: 209 kg/cm²
- Volumetric Weight: 2703 kg/m³
- Water absorption at atmospheric pressure: 0,11 %
- Apparent Porosity: 0,31 %
- Thermal Linear Expansion Coefficient: $3,30 \times 10^{-6}$ per °C
- Abrasion Test: 2,20 mm
- Impact Test: 45 cm



LIOZ ROSA

Technical Information

- Compression Breaking Load: 897 kg/cm²
- Compression B.L. after F.T.: 1058 kg/cm²
- Bending Strength: 122 kg/cm²
- Volumetric Weight: 2695 kg/m³
- Water absorption at atmospheric pressure: 0,16 %
- Apparent Porosity: 0,43 %
- Thermal Linear Expansion Coefficient: $5,90 \times 10^{-6}$ per °C
- Abrasion Test: 2,40 mm
- Impact Test: 45 cm



marmonegrais
mármore e granitos, lda



AZUL VALVERDE

Technical Information

- Compression Breaking Load: 1500 Kg/cm²
- Compression B.L. after F.T.: 1500 Kg/cm²
- Bending Strength: 150 Kg/cm²
- Volumetric Weight: 2640 Kg/m³
- Water absorption at atmospheric pressure: 0,50 %
- Apparent Porosity: 1,20 %
- Thermal Linear Expansion Coefficient: $3,1 \times 10^{-6}$ per °C
- Abrasion Test: 2,6 mm
- Impact Test: 40 cm



ESTREMOZ CLARO

Technical Information

- Compression Breaking Load: 967Kg/cm²
- Compression B.L. after F.T.: 933 Kg/cm²
- Bending Strength: 208 Kg/cm²
- Volumetric Weight: 2713 Kg/m³
- Water absorption at atmospheric pressure: 0,07 %
- Apparent Porosity: 0,17 %
- Thermal Linear Expansion Coefficient: $12,6 \times 10^{-6}$ per °C
- Abrasion Test: 2,1 mm
- Impact Test: 45-50 cm



ESTREMOZ PELE TIGRE

Technical Information

- Compression Breaking Load: 1018Kg/cm²
- Compression B.L. after F.T.: 912 Kg/cm²
- Bending Strength: 312 Kg/cm²
- Volumetric Weight: 2717 Kg/m³
- Water absorption at atmospheric pressure: 0,08 %
- Apparent Porosity: 0,22 %
- Thermal Linear Expansion Coefficient: $14,7 \times 10^{-6}$ per °C
- Abrasion Test: 3 mm
- Impact Test: 60 cm



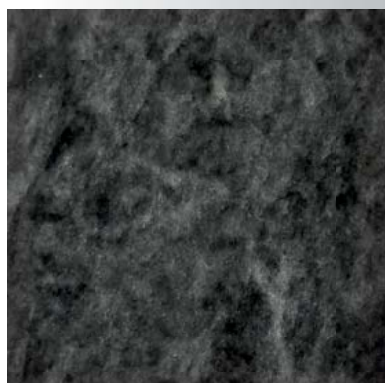
ESTREMOZ AZUL

Technical Information

- Not available



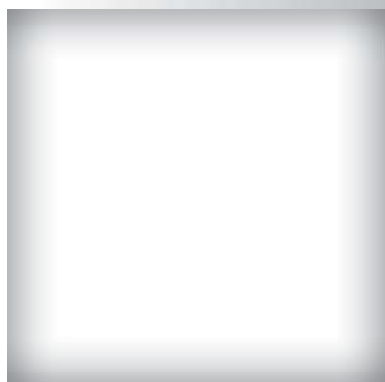
marmonegrais
mármore e granitos, lda



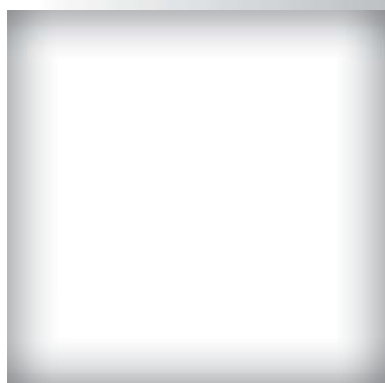
RUVINA ESCURO

Technical Information

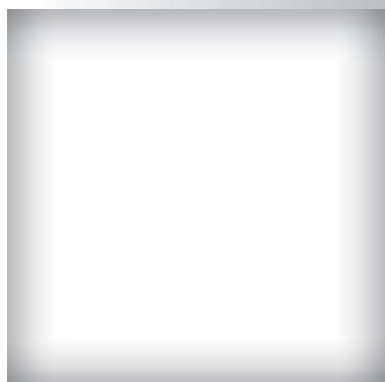
- Compression Breaking Load: 930 kg/cm²
- Compression B.L. after F.T.: 952 kg/cm²
- Bending Strength: 270 kg/cm²
- Volumetric Weight: 2715 kg/m³
- Water absorption at atmospheric pressure: 0,05 %
- Apparent Porosity: 0,14 %
- Thermal Linear Expansion Coefficient: 5,40 x 10⁻⁶ per °C
- Abrasion Test: 2,60 mm
- Impact Test: 45-50 cm



Technical Information



Technical Information



Technical Information